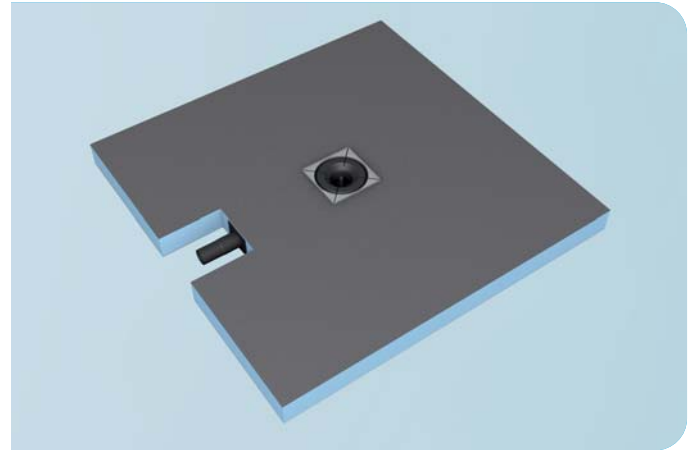


Fundo Plano®

- Minimal installation height of 65 mm incl. drain
- Ideally suited for renovations
- Precise slope with integrated drain
- 100% waterproof to the core



General product description

Floor-level shower element for direct tiling with horizontal floor drain for new builds and renovation projects particularly involving old buildings.

Areas of application

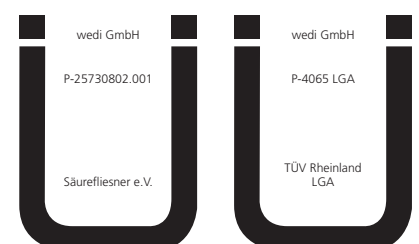
- In private residential construction
- In public buildings complying with DIN 18040 part 1
- In accessible dwellings complying with DIN 18040 part 2 (note specifications for minimum tile size if wheelchair access is planned, see technical specifications)
- As a construction seal combined with tile and natural stone coverings of load class A0. An additional seal must be applied using flexible sealant to achieve load class A0, more info available at www.wedi.eu

Product properties

Fundo Plano can be installed on almost any substrate as an individual, tileable, floor-level shower system. This system includes a waterproof rigid foam core with a special, robust, fibreglass-reinforced mortar coating and a given surface slope with an extremely-flat integrated horizontal drain.

Surface requirements, processing

Information regarding processing and substrate requirements can be found in the assembly instructions (see www.wedi.eu).



Technical properties of raw foam building board systems

Extruded polystyrene hard foam core	XPS
Long-term compressive stress (50 years) \leq 2% compression EN 1606 standard	0.08 N/mm ²
Pressure resistance at 10% compression EN 826 standard	0.25 N/mm ²
Thermal conductivity EN 13164	0.036 W/mK
Basic density according to EN 1602	32 kg/m ³
Temperature limits	-50°C / +75°C
Fire behaviour EN 13501-1	E
Tested waterproofness	1.5 bar

Technical properties of drain

Special drain integrated into the Fundo floor element with odour trap and stainless steel cover.
Tested based on DIN EN 1253 (abP test number 4065).

Frame (fixed to the element)	136 x 136 x 8 mm
Stainless steel grid	132 x 132 mm
Levelling frame	136 x 136 x 24.7 mm
Drain performance	30 l/min; 0.5 l/s
Connection pipe made from ABS	DN 40

Technical properties of Fundo Plano

Wheelchair load-bearing from minimum tile size	50 x 50 mm
Glass mosaic from minimum size	20 x 20 mm
Minimum foundation height	65 mm
Surface slope (from outer edge of Fundo floor element to outer edge of drain opening)	≥ 2.4 %

wedi Fundo floor elements can be shortened on site, but the geometry of the elements should be maintained.

Packaging

1 box

Storage

In principle, the Fundo Plano should be stored flat. It must be protected against direct sunlight and moisture.

Information about finishing and application options for wedi products, technical recommendations or advice and other information provided by our employees (technical usage advice) is accurate to the best of our knowledge, but is non-binding and is given with the exclusion of any liability. It does not exempt our customers and their buyers from carrying out their own checks and trials on the suitability of the products for the intended processes and purposes.