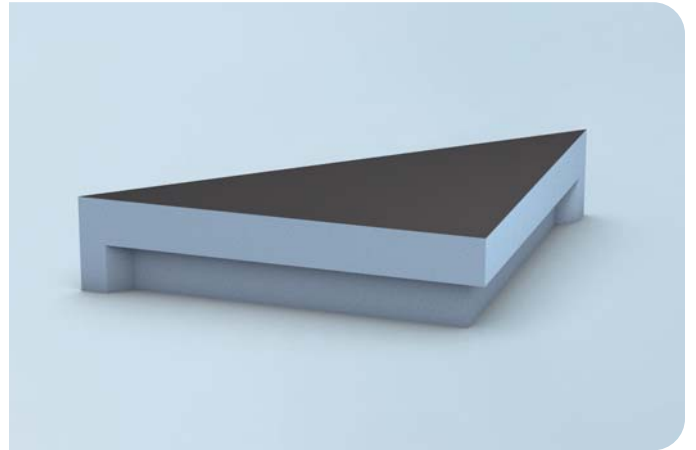


wedi Sanoasa corner seat element

- Tileable corner seat element for the shower in triangular shape



General product description

The wedi Sanoasa corner seat element is a factory-made, prefabricated seating solution for individual tiling. Installation is possible before and after tiling.

Applications

For private and commercial use indoors with direct contact with process and cleaning water.

Product properties

- Watertight
- Stable
- Lightweight

Surface requirements, laying

The base must be sufficiently load bearing and even.

Processing

You can find information on processing in the assembly instructions (see www.wedi.eu).

Information about finishing and application options for wedi products, technical recommendations or advice and other information provided by our employees (technical usage advice) is accurate to the best of our knowledge, but is non-binding and is given with the exclusion of any liability. It does not exempt our customers and their buyers from carrying out their own checks and trials on the suitability of the products for the intended processes and purposes.

Technical properties Sanoasa corner seat element

Size M: 600 × 300 mm (Width x Depth)	1.10 Kg
Size L: 800 × 400 mm (Width x Depth)	1.25 Kg
Maximum load	150 Kg

Technical properties of raw foam building board systems

CO²-foamed, extruded polystyrene rigid foam with closed cell structure and flame-retardant additive. The polystyrene rigid foam is HCFC and CFC-free.

Long-term compressive strength (50 years) ≤ 2% compression EN 1606	0.08 N/mm ²
Compressive resistance or compressive strength at 10% compression EN 826	0.25 N/mm ²
Associated module of elasticity EN 826	10 – 18 N/mm ²
Thermal conductivity EN 13164	0.036 W/mK
Tensile strength EN 1607	0.45 N/mm ²
Shearing resistance EN 12090	0.2 N/mm ²
Shear modulus EN 12090	7 N/mm ²
Bulk density EN 1602	32 kg/m ³
Resistance to water vapour diffusion (μ) EN 12086	100
Water absorption under long-term immersion EN 12087	≤ 1.5 % by vol.
Capillary action	0
Linear coefficient of thermal expansion	0.07 mm/mK
Temperature limits	-50°C / +75°C
Fire behaviour EN 13501	E
Carbon dioxide propellant GWP value	1

Packing

1 seat element, 2 installation beams, 3-m reinforcement tape

Storage

The product(s) should be protected from direct sunlight and moisture.

Safety notice

none