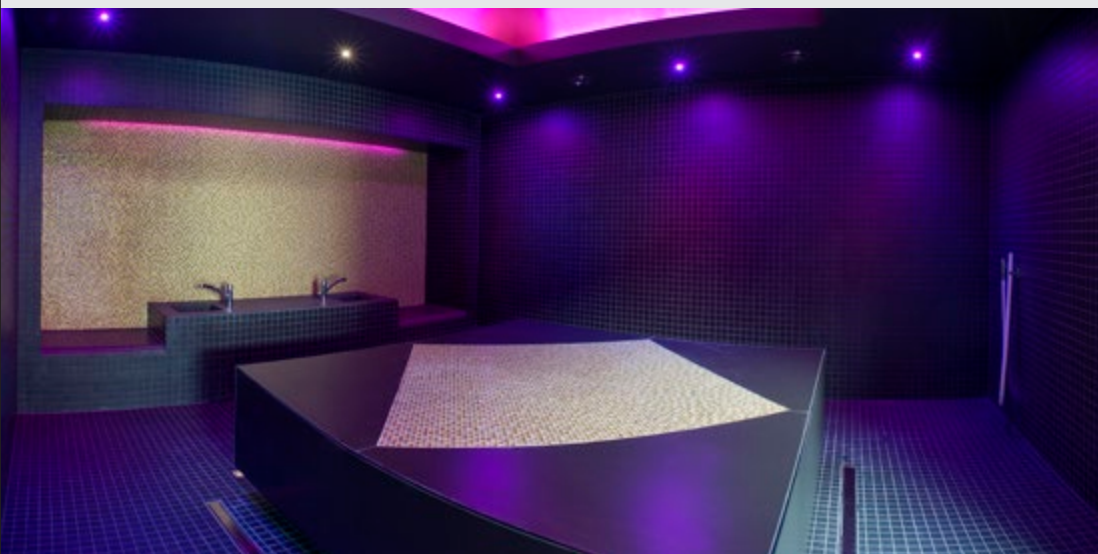


blu - aquatics centre

Design and installation of
pre-fabricated elements on the construction site



Reference

Indoor swimming pool incl. wellness area

Location

Potsdam

Year

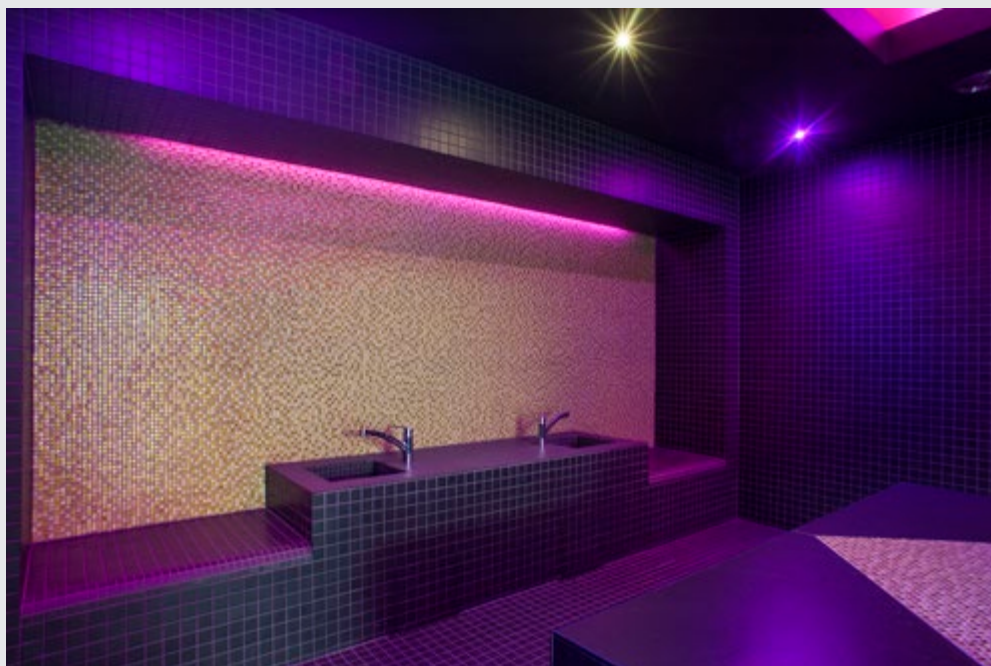
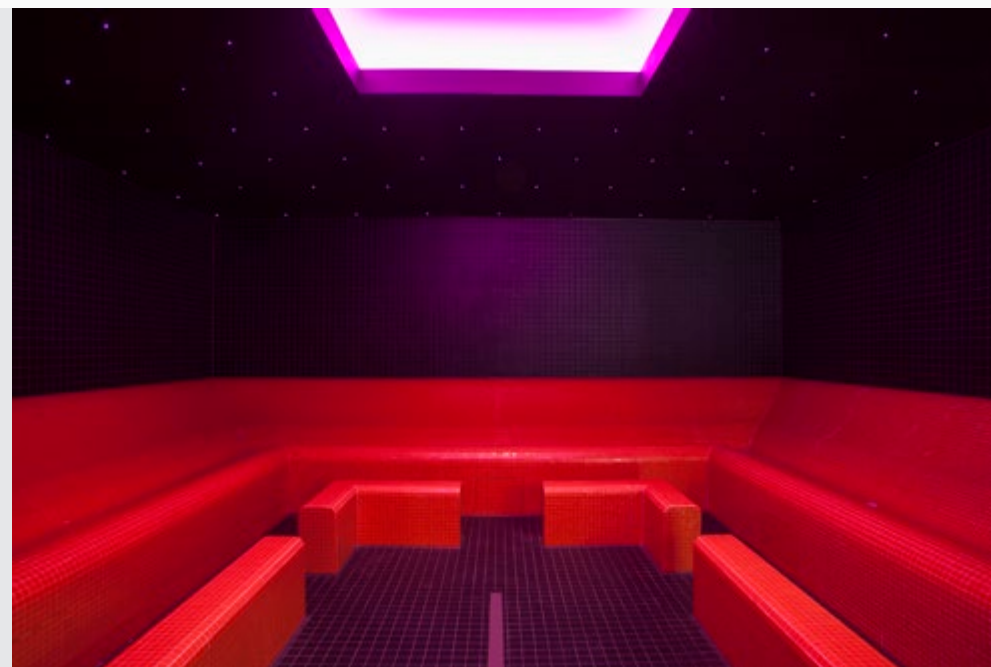
2017

Project type
New build

Architect gmp Architekturbüro
Hardenbergstr. 4-5
10623 Berlin
www.gmp-architekten.de

Installer Heidrich Fliesen GmbH
Zernitzer Dorfstr. 40
16845 Zernitz-Lohm
www.heidrich-fliesen.de

Client Stadtwerke Potsdam



Introducing blu:

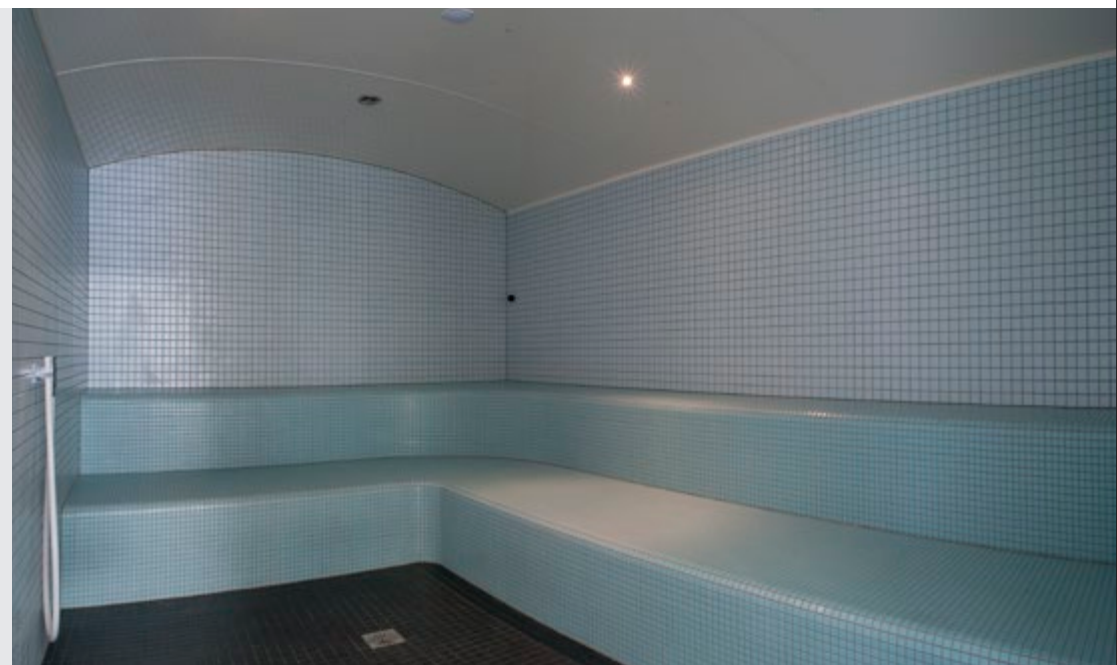
Water provides increased resistance to movement, thus muscles work harder.

This makes water a perfect medium for improvement of endurance, strength and flexibility - what's more, it is fun too!

Whether baby, child or senior, water-based activities are a healthy option for all.

At blu, you can choose from a wide variety of services such as classes, massages, children's birthdays and many other activities centred around water.

Source: http://www.swp-potsdam.de/swp/de/sfb/angebote_10/kampagne___standardseite_14.php



Products used

Base products

-

Products used

Individual products

Benches at the pool edges/diving pool

Benches with foot baths in the upstairs wellness area

Bench in the relaxation room area of the wellness area

Platform in the pool attendant's office

Outer edges of the bubble loungers in the indoor-outdoor pool

Products used

Plug & Play systems

Steam bath

Hamam

Caldarium

