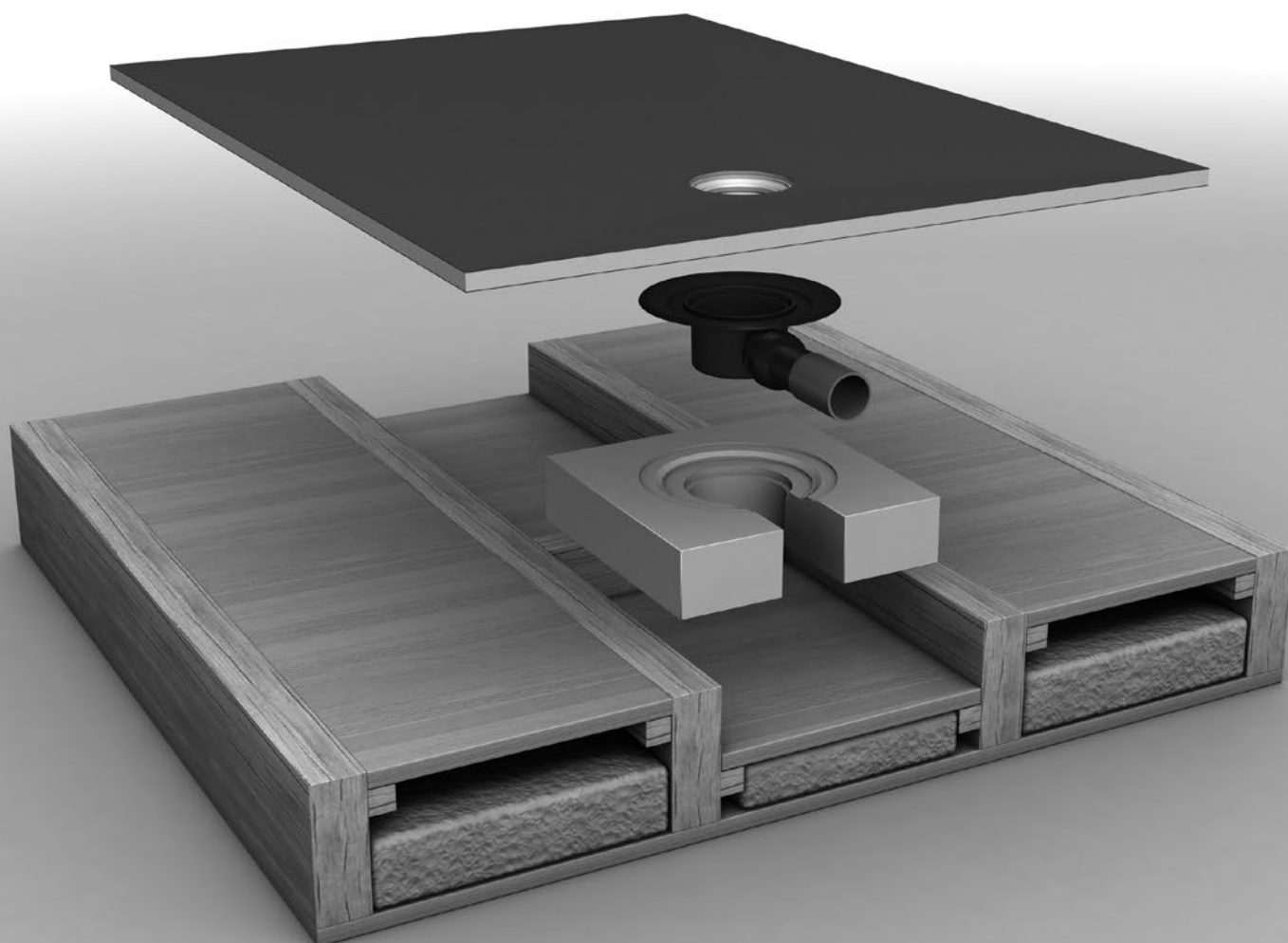
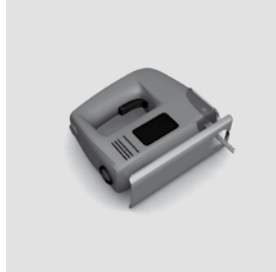
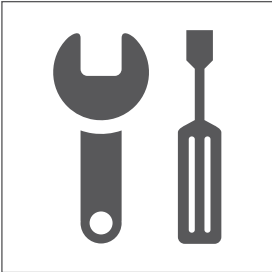
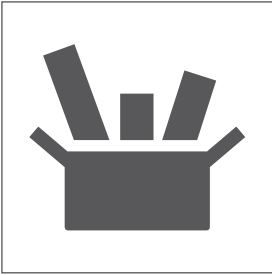


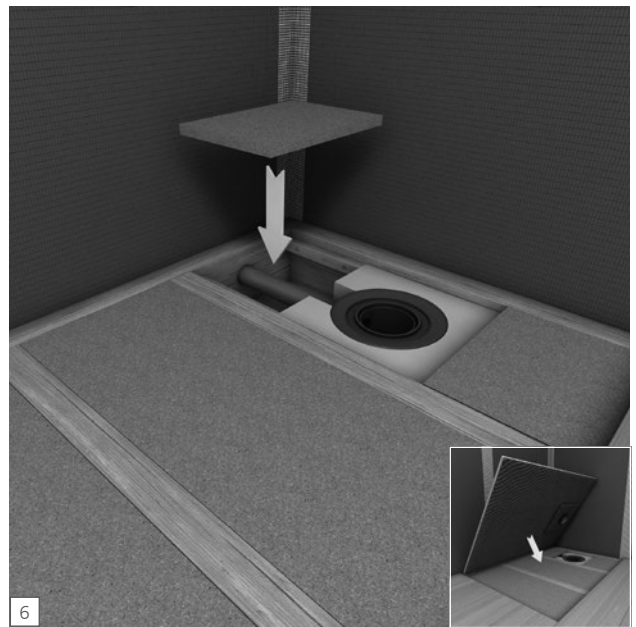
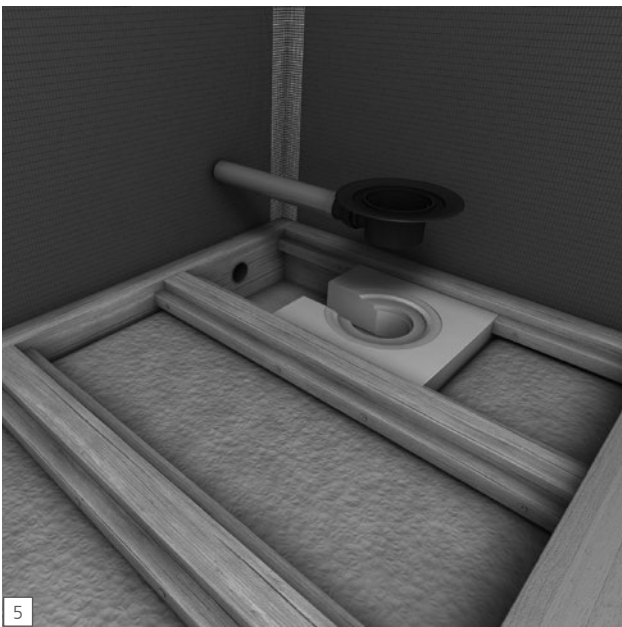
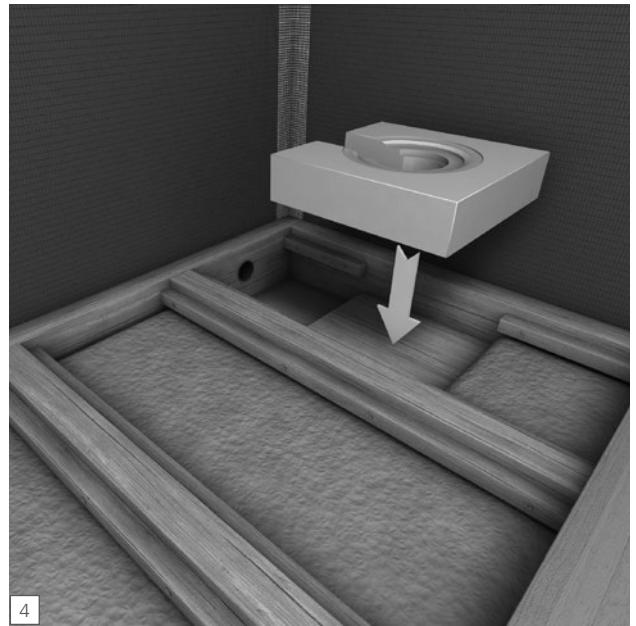
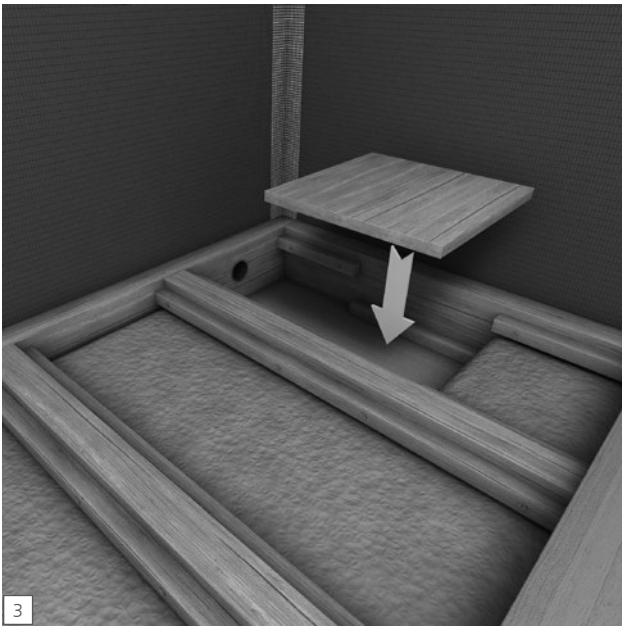
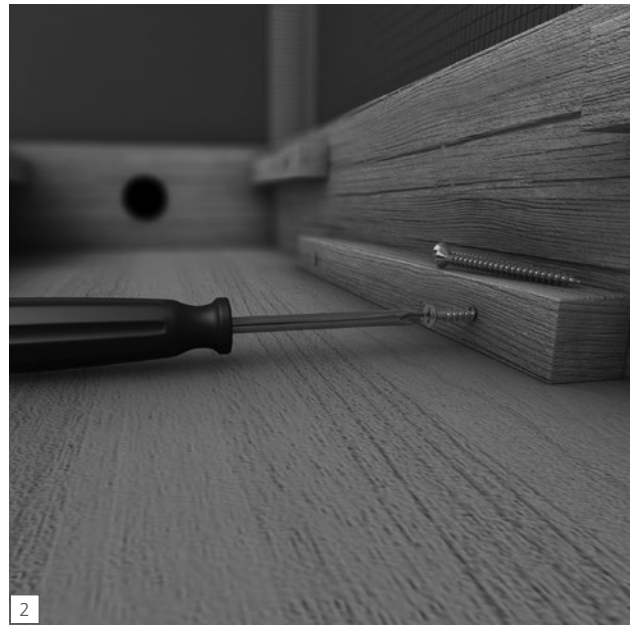
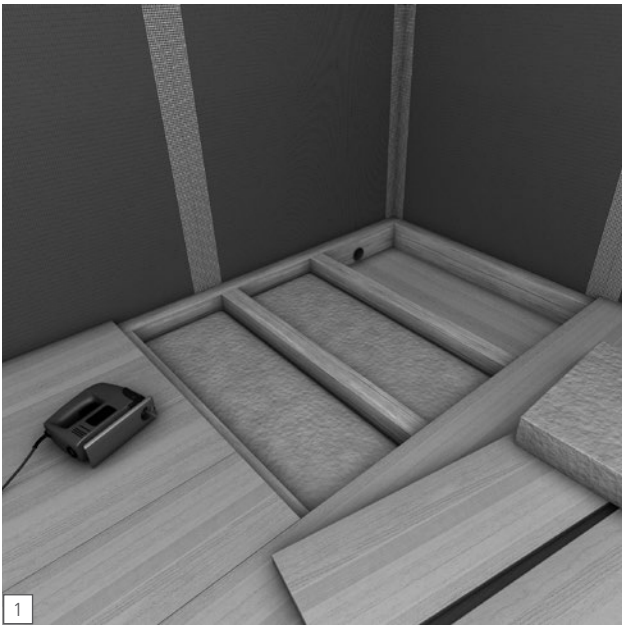
# wedi Fundo Ablauf-Unterbauelement

wedi Fundo drain-substructure element

wedi Fundo Élément de calage pour écoulement









**wedi GmbH**

Hollefeldstraße 51  
48282 Emsdetten  
Deutschland

Telefon +49 25 72 156-0  
Telefax +49 25 72 156-133

info@wedi.de  
www.wedi.eu